

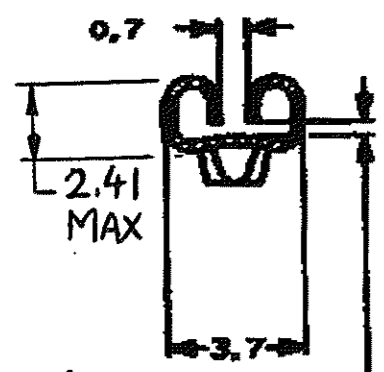
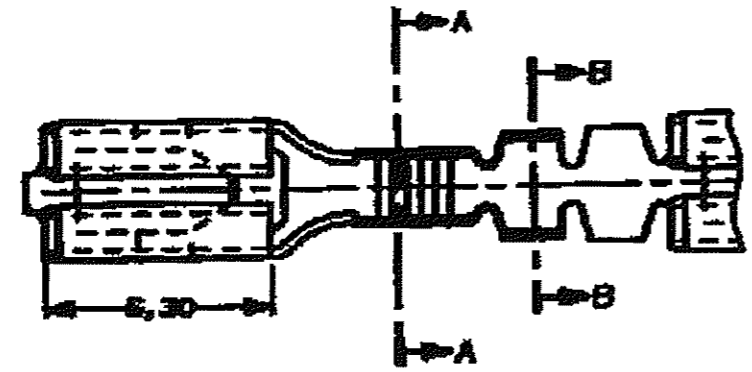
DO NOT SCALE  
DIMENSIONS IN mm

METRIC

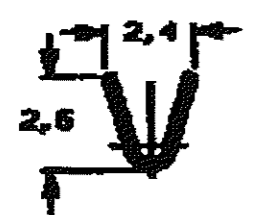
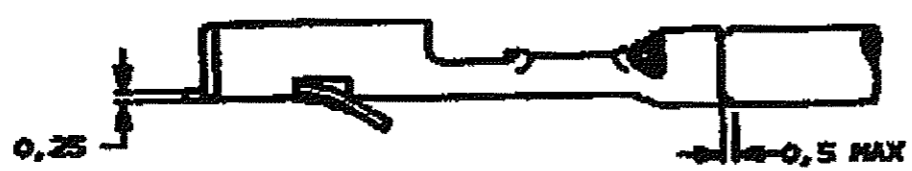
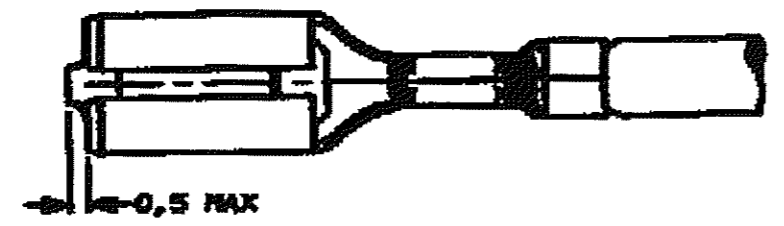
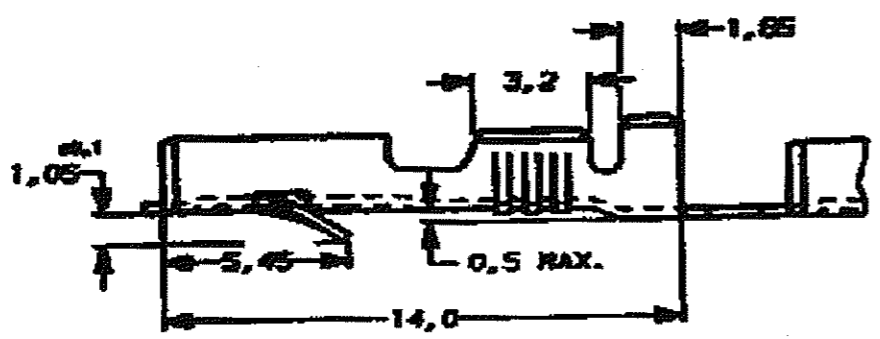


NOTES:

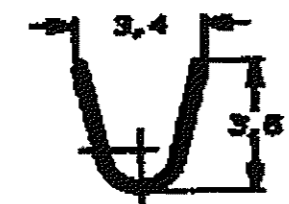
- ▲ FOR USE ON MINIATURE APPLICATORS (LEFT-RIGHT FEED) AND STANDARD APPLICATORS (RIGHT-LEFT FEED).
- ▲ BRASS ACC. ASTM B36 ALLOY 250.
- ▲ PH. BRONZE ACC. ASTM B103.
- ▲ GAGE 0,74 MUST NOT ENTER, GAGE 0,58 MUST ENTER.
- 5 REELED WITH PAPER COVER.
- 6 UNLESS OTHERWISE SPECIFIED ALL TOLERANCES  $\pm 0,4mm$ .



▲ FOR 0,8 mm TAB THICKNESS



SECTION A-A



SECTION B-B

DOC. CENTRE  
08 JULI 1993

NOTES	FINISH	MATERIAL	PARTNUMBER
▲	PH. BRONZE	PH. BRONZE 6XSn	160864-6
▲	PH. BRONZE	PH. BRONZE 6XSn	160864-5
▲	PRE-TINPLATED	PH. BRONZE 4XSn	160864-4
▲	UNPLATED	PH. BRONZE 4XSn	160864-3
▲	PRE-TINPLATED	BRASS	160864-2
▲	UNPLATED	BRASS	160864-1

CUSTOMER DRAWING				FOR REFERENCE ONLY WILL NOT BE UPDATED	
THIS DRAWING IS UNPUBLISHED RELEASED FOR PUBLICATION					
<b>STE</b> TE Connectivity					
.110 SERIES FAST-IN-ON RECEPTACLE					
D1	REVISED PER ECO-11-005150	RK	HMR	28MAR11	
L.T.R. REVISION RECORD		DR.	CHK.	DATE	
DR.	P. REVISION	CHK.	APPROB.	DATE	
DATE: 12-09-09	DATE:		DATE: 05-27-93		
C-160864				REV. L.T.R.	SHEET
				D1	1 OF 1

WIRE RANGE :  
0,5-1,0 mm<sup>2</sup>  
INSULATION RANGE :  
1,4-2,3 DIA.

