

2-stage filter for 3-phase systems



**Description**

- 3 phase line filter with standard attenuation

**Standards**

- IEC 60939  
- UL 1283, Edition 5, CSA 22.2 No. 8-M1986, @ Ta 75 °C

**Approvals**

- VDE Certificate Number: 40004666  
- UL File Number: E72928

**Applications**

- Voltage rating 480 VAC for world wide acceptance  
- Protection against interference voltage from the mains  
- For standard and industrial applications  
- Suitable for use in equipment according to IEC/UL 60950

**Weblinks**

[pdf datasheet](#), [html-datasheet](#), [General Product Information](#), [Approvals](#), [CE declaration of conformity](#), [RoHS](#), [CHINA-RoHS](#), [REACH](#), [Distributor-Stock-Check](#), [Detailed request for product](#)

**Technical Data**

Rated Current	8 - 64 A
Rated voltage	480VAC, 50/60 Hz
Approval for	8 - 64 A @ 40 (75) °C / 480VAC
Overload Current	1.5 x Ir
Leakage Current	industrial < 5 mA (440V / 50Hz)
Dielectric Strength	480 VAC: 2.25 kVDC between L-L 3 kVDC between L-PE Test voltage (2 sec)
Number of Filter Stages	2-stage
Weight	1.7 - 7.45 kg
Material: Housing	Metal
Sealing Compound	UL 94V-0

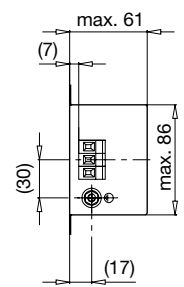
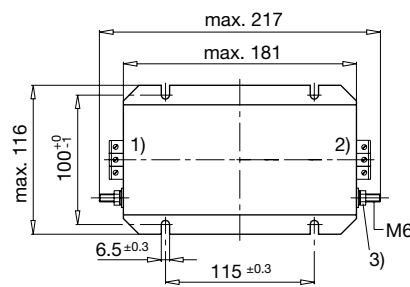
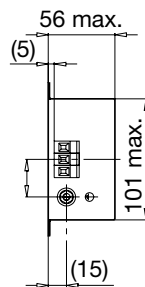
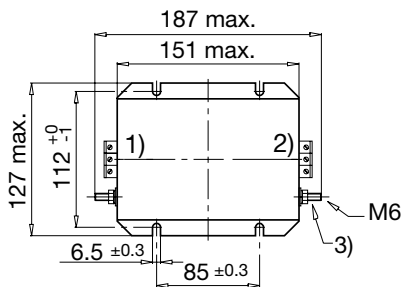
Mounting	Screw-on mounting on chassis, from top
Terminal	Screw clamps
Operating Temperature	-25 °C to 100 °C
Climatic Category	25/100/21 acc. to IEC 60068-1
Degree of Protection	IP 20 acc. to IEC 60529
Protection Class	Suitable for appliances with protection class I acc. to IEC 61140
MTBF	> 200'000h acc. to MIL-HB-217 F

Detailed information on product approvals, code requirements, usage instructions and detailed test conditions can be looked up in [General Product Information](#)

**Dimension**

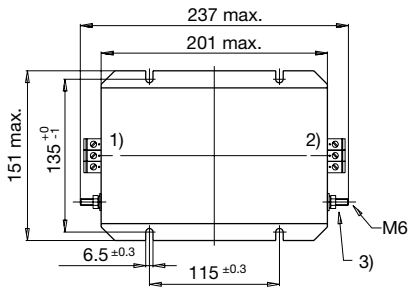
Case 27-3

Case 31-3

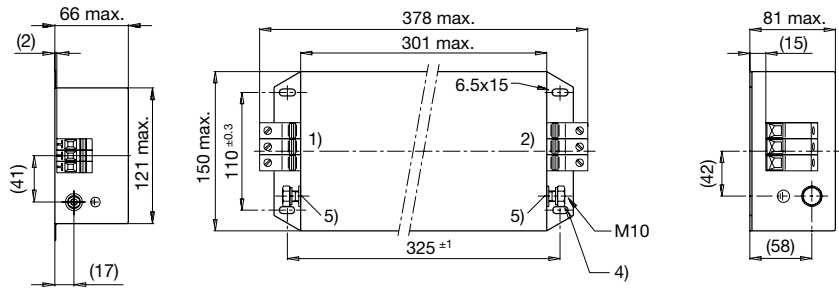


- 1) Line
- 2) Load
- 3) Nut torque 3...4 Nm

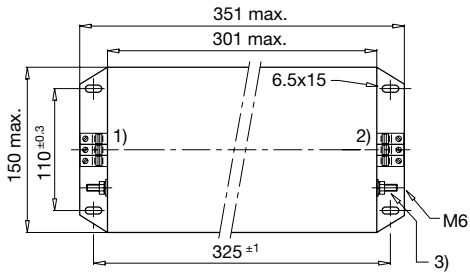
Case 32-7



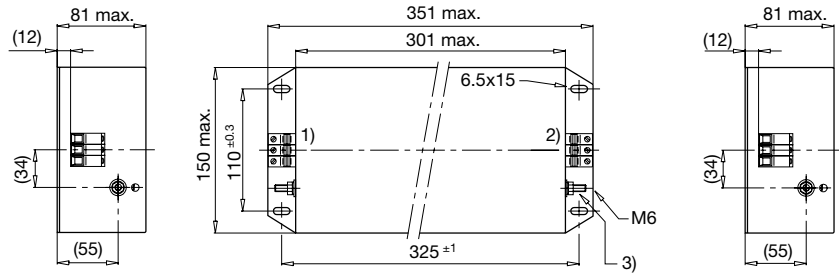
Case 37-3



Case 38-3



Case 40-3

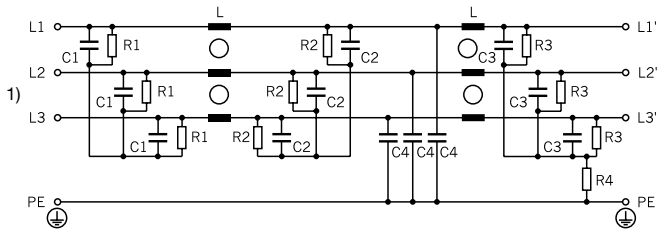


- 1) Line
- 2) Load
- 3) Tightening torque 3...4 Nm
- 4) Tightening torque 10...17 Nm
- 5) Do not unscrew lock-nut

Technical data to the filter components

Rated Current @ Ta 40°C (75°C) [A]	Characteristic	L [mH]	C1 [µF]	C2 [µF]	C3 [nF]	C4 [nF]	R1 [MΩ]	R2 [MΩ]	R3 [MΩ]	R4 [MΩ]
8 (5.6)	Excellent attenuation	8	1.0	1.0	2.2	47	-	-	1	1
12 (6.6)	Excellent attenuation	5.5	1.0	1.0	2.2	47	-	-	1	1
16 (8.8)	Excellent attenuation	4.5	1.0	1.0	2.2	47	-	-	1	1
25 (13)	High attenuation	2.4	1.0	2.2	2.2	47	-	-	1	1
25 (16)	Excellent attenuation	4.5	1.0	2.2	2.2	47	-	-	1	1
36 (19)	High attenuation	1.5	1.0	2.2	4.4	47	-	1	1	1
36 (19.5)	Excellent attenuation	3	1.0	2.2	4.4	47	1	1	1	1
50 (27)	High attenuation	1	2.2	2.2	4.4	100	-	1	1	1
64 (36)	Excellent attenuation	0.85	2.2	2.2	4.4	100	-	1	1	1

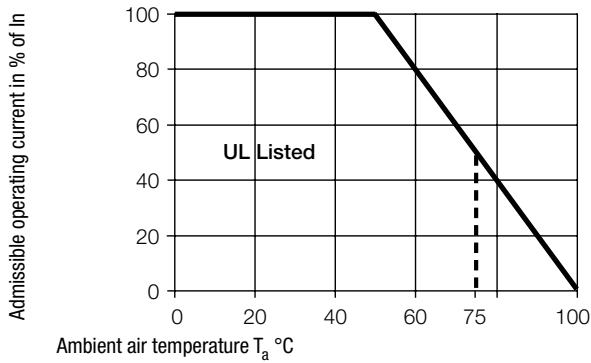
Diagrams



1) Line

Derating Curves

Permissible Working Current as a Function of Ambient Temperature



Attenuation Loss

----- 50Ω differential mode    \_\_\_\_\_ 50Ω common mode

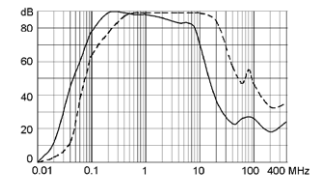
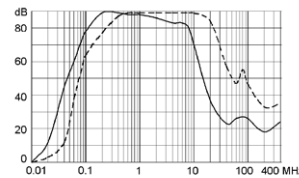
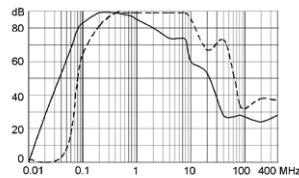
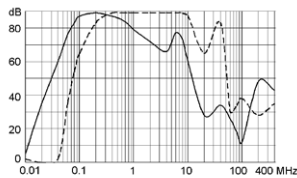
Industrial version

8A (FMBC-0927-0810)

12A (FMBC-0927-1210)

16A (FMBC-0931-1610)

25A (FMBC-0932-2510)

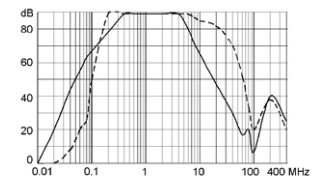
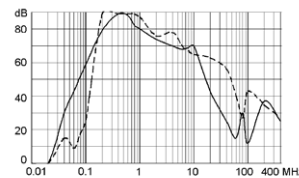
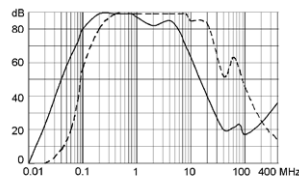
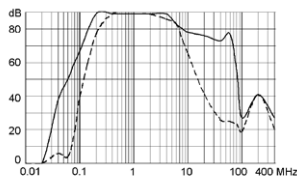


25A (FMBC-0932-2510L)

36A (FMBC-0938-3610)

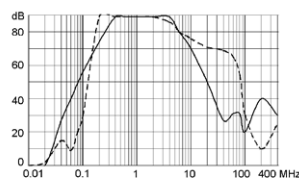
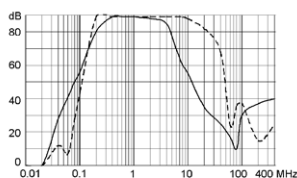
36A (FMBC-0940-3610L)

50A (FMBC-0938-5010)



50A (FMBC-0938-5010L)

64A (FMBC-0937-6410)



All Variants

Rated Current @ Ta 40°C (75°C) [A]	Characteristic	Tripped Power Dissipation [W]	Contact Resistance [mΩ]	Leakage Current [mA] @ 440V, 60Hz <sup>1)</sup>	Weight [kg]	Screw clamps [mm <sup>2</sup> ] <sup>2)</sup>	Housings	Order Number
8 (5.6)	Excellent attenuation	10.6	55	0.5	1.7 kg	4	27-3	FMBC-0927-0810
12 (6.6)	Excellent attenuation	10	23	0.5	1.9 kg	4	27-3	FMBC-0927-1210
16 (8.8)	Excellent attenuation	14.6	19	0.5	2.28 kg	4	31-3	FMBC-0931-1610
25 (13)	High attenuation	20.7	11	0.5	3.5 kg	6	32-7	FMBC-0932-2510L
25 (16)	Excellent attenuation	18.8	10	0.5	3.4 kg	6	32-7	FMBC-0932-2510
36 (19)	High attenuation	18.3	4.7	0.5	6.5 kg	6	40-3	FMBC-0940-3610L
36 (19.5)	Excellent attenuation	29.2	7.5	0.5	7.4 kg	6	38-3	FMBC-0938-3610
50 (27)	High attenuation	25.9	3.45	1.2	7 kg	10	38-3	FMBC-0938-5010L
50 (27)	Excellent attenuation	30.3	4.0	1.2	7 kg	10	38-3	FMBC-0938-5010
64 (36)	Excellent attenuation	47.9	3.9	1.2	7.45 kg	25	37-3	FMBC-0937-6410

Most Popular.

Availability for all products can be searched real-time:<http://www.schurter.com/en/Stock-Check/Stock-Check-SCHURTER>

1) Nominal leakage current acc. to IEC60950 - 5.2.5. under normal operating conditions. Note: worst case leakage current acc. to IEC60950 - Annex G4 (situation with two interrupted lines) can be much higher.

2) Maximum conductor cross section (wire gauge) to be used; a comparative table for AWG and mm<sup>2</sup> values can be found in the general product information [www.schurter.com/emc\\_info](http://www.schurter.com/emc_info)

**Packaging unit** 1 Pcs