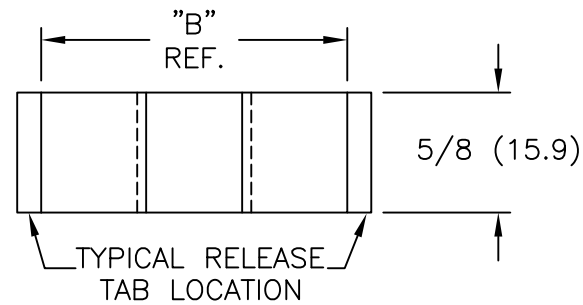
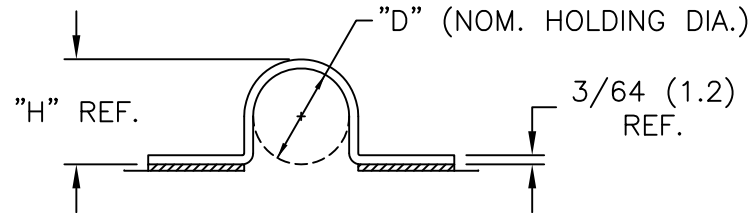


PART NO.	"B"	"D"	"H"
UC-2-RT	1-7/32 (30.9)	1/8 (3.2)	11/64 (4.4)
UC-4-RT	1-11/32 (34.1)	1/4 (6.4)	19/64 (7.5)
*UC-6-RT	1-15/32 (37.3)	3/8 (9.5)	27/64 (10.7)
*UC-8-RT	1-19/32 (40.4)	1/2 (12.7)	35/64 (13.9)

*PARTS AVAILABLE BY SPECIAL ORDER.



NOTES:

- MAT'L: RIGID PVC (RMS-04)
- COLOR: BLACK
CLEAR PVC AVAILABLE BY SPECIAL ORDER.
- TAPE: 1/32" THICK DOUBLE SIDED ADHESIVE (RMS-15)
- CUSTOM LENGTHS AVAILABLE BY SPECIAL ORDER.

E			TITLE: U - CLIP				DWG IN IN(MM)		FINAL	
SEE CO 200604 FOR CHANGES			SK 12.01.10	FILE # UC	DWN: P.B.	DT: 08-02-94	PART #		PRINT TYPE	
SEE ECN # 1135			SJ 03.07.06	MAT'L: SEE NOTES	CHKD:	ENG:	SEE TABLE		CA	
CHANGED NOTE 2 & ADDED NOTE 4			SJ 03.26.02	RE: RICHCO INC.	RICHCO INC.					
CORRECTED TAPE THICKNESS TO 1/32"			JK 2.18.00	ENG@RICHCO-INC.COM		(773) 539-4060				
ADDED NOTES, CORRECTED TAPE THICKNESS TO 1/16"			JK 2.10.00	FRAC=±1/32		ANG=±1'				
REV	DESCRIPTION	ENGR	DATE							