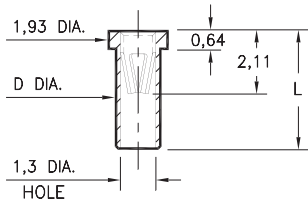


PIN RECEPTACLES

FOR 0,64 - 0,94 DIAMETER PINS AND 0,64 SQUARE PINS

0305

0305-X-15-XX-47-XX-10-0
Solder mount in 1,5/1,55 mounting hole
Also available on 8mm or 24mm wide carrier tape: See chart for details
Order as: 0305-X-57-XX-47-XX-10-0



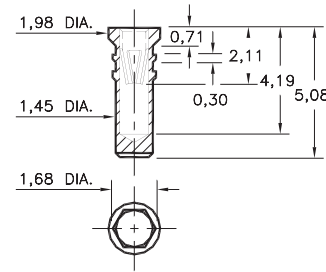
| Basic Part Number | Length L | Dia. D |
|-------------------|----------|--------|
| 0305-0 | 2,41 | 1,42 |
| 0305-1 | 2,67 | 1,47 |
| 0305-2 | 3,94 | 1,47 |

T&R Packaging

| Basic Part Number | Tape Width | Parts per 330mm Reel |
|-------------------|------------|----------------------|
| 0305-0 | 8mm | 6,000 |
| 0305-1 | 8mm | 6,000 |
| 0305-2 | 24mm | 1,500 |

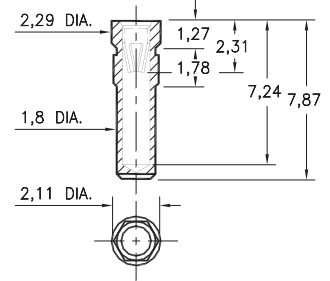
0279

0279-0-15-XX-47-XX-10-0
Hex press-fit in 1,57 plated through-hole



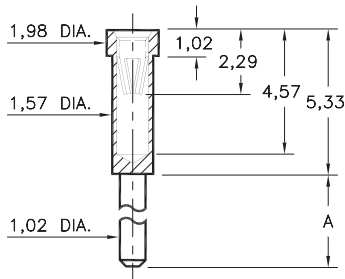
0330

0330-0-15-XX-47-XX-10-0
Hex press-fit in 2,01 plated through-hole



0300/8300

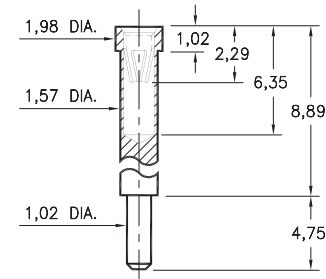
X300-X-15-XX-47-XX-10-0
Solder mount in 1,07 min. mounting hole



| Basic Part Number | Length A |
|-------------------|----------|
| 0300-1 | 2,79 |
| 0300-2 | 4,75 |
| 8300-0 | 3,56 |

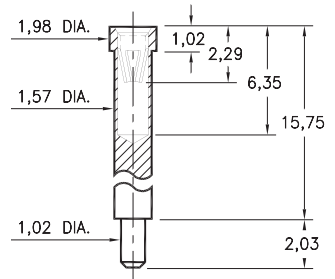
0301

0301-1-15-XX-47-XX-10-0
Solder mount in 1,07 min. mounting hole



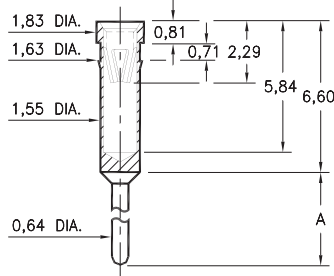
0309

0309-2-15-XX-47-XX-10-0
Solder mount in 1,07 min. mounting hole



0399

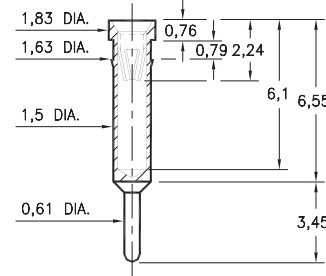
0399-X-15-XX-47-XX-04-0
Press-fit in 1,55 mounting hole



| Basic Part Number | Length A |
|-------------------|----------|
| 0399-0 | 5,84 |
| 0399-1 | 4,57 |

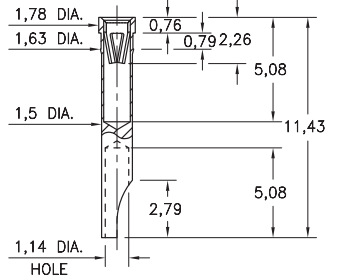
1304

1304-0-15-XX-47-XX-04-0
Press-fit in 1,55 mounting hole



1134

1134-0-18-15-47-27-10-0
Press-fit in 1,55 mounting hole



SPECIFICATIONS:

Shell Material: Brass Alloy 360, 1/2 Hard
Contact Material: Beryllium Copper Alloy 172, HT
Dimensions: Millimeters
Tolerances On: Lengths: ± 0,13
Diameters: ± 0,051
Angles: ± 2°



ORDER CODE: **XXXX - X - XX - XX - 47 - XX - XX - 0**

BASIC PART #

SPECIFY SHELL FINISH:

- 01 5,08µm TIN/LEAD OVER NICKEL
- ◆ 80 5,08µm TIN OVER NICKEL (RoHS)
- ◆ 15 0,25µm GOLD OVER NICKEL (RoHS)

SPECIFY CONTACT FINISH:

- 01 5,08µm TIN/LEAD OVER NICKEL
- ◆ 80 5,08µm TIN OVER NICKEL (RoHS)
- ◆ 27 0,76µm GOLD OVER NICKEL (RoHS)

SELECT CONTACT:

#47 CONTACT (DATA ON PAGE 256)

(For alternate contact choices, see group D on page 248)

