

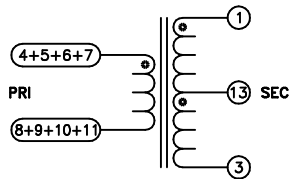
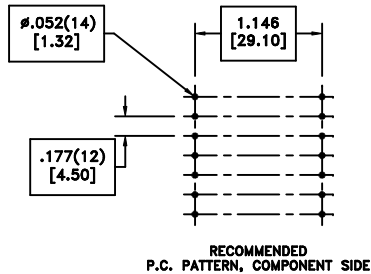
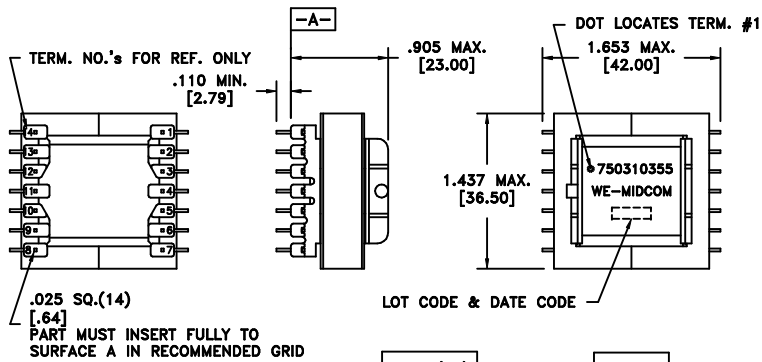
CUSTOMER TERMINAL	RoHS	LEAD(Pb)-FREE
Sn100%	Yes	Yes

more than you expect



**ELECTRICAL SPECIFICATIONS @ 25°C unless otherwise noted:**

PARAMETER	TEST CONDITIONS	VALUE
D.C. RESISTANCE	7-8 tie(4+5+6+7, 8+9+10+11), @20°C	0.005 ohms max.
D.C. RESISTANCE	1-3 @20°C	0.250 ohms max., 0.120 typ.
INDUCTANCE	7-8 tie(4+5+6+7, 8+9+10+11), 50kHz, 10mVAC, Ls	2.5uH ±10%
SATURATION CURRENT @85°C	20% rolloff from initial	>50ADC
CONTINUOUS CURRENT	40°C temp rise from ambient	24A
LEAKAGE INDUCTANCE	7-8 tie(1+3, 4+5+6+7, 8+9+10+11), 100kHz, 1.0VAC, Ls	100nH max.
DIELECTRIC	PRI-SEC 1250VAC, 1 second	1000VAC, 1 minute
URNS RATIO	(13-3):(1-13)	1:1, ±1%
URNS RATIO	(1-3):(4-11)	10:1, ±1%
URNS RATIO	(1-3):(5-10)	10:1, ±1%
URNS RATIO	(1-3):(6-9)	10:1, ±1%
URNS RATIO	(1-3):(7-8)	10:1, ±1%



REV.	DATE	Packaging Specifications Method: Tray PKG-0838 www.we-online.com/midcom	
6B	8/11		CONVENTION PLACEMENT
6A	2/09	SEE REVISION SHEET FOR REVISION LEVEL	REVISION LEVEL

Tolerances unless otherwise specified:  
Angles: ±1°      Decimals: ±.005 [.13]  
Fractions: ±1/64      Footprint: ±.001 [.03]

This drawing is dual dimensioned. Dimensions in brackets are in millimeters.

DRAWING TITLE  
**TRANSFORMER**

eiSos p/n: 750310355

PART NO.  
**750310355**

compliant RoHS

SPECIFICATION SHEET 1 OF 1